

IN THE DISTRICT COURT OF THE FIFTH JUDICIAL DISTRICT OF THE STATE OF IDAHO, IN AND FOR THE COUNTY OF TWIN FALLS

In Re CSRBA ) PARTIAL DECREE PURSUANT TO I.R.C.P. 54(b)
Case No. 49576 ) FOR FEDERAL RESERVED
) WATER RIGHT NO. 94-09511B

NAME AND ADDRESS: UNITED STATES OF AMERICA ACTING THROUGH
USDA FOREST SERVICE
550 W FORT ST MSC 033
BOISE ID 83724

SOURCE: See Attachment 1, Column A TRIBUTARY: See Attachment 1, Column B

Sources are located on National Forest System Land in the Spruce Creek-N. Fork Coeur d'Alene River subwatershed (HUC12 170103010101).

QUANTITY: The amount of water necessary to control and suppress forest fires.

PRIORITY DATE: 06/29/1933

POINT OF DIVERSION: See Attachment 1, Columns C through G

PURPOSE AND PERIOD OF USE: PURPOSE OF USE PERIOD OF USE
Administrative-Fire Suppression 01/01 - 12/31

PLACE OF USE: National Forests in Idaho and the Kaniksu, Lolo and Kootenai National Forests in Montana.

See Attachment 2.

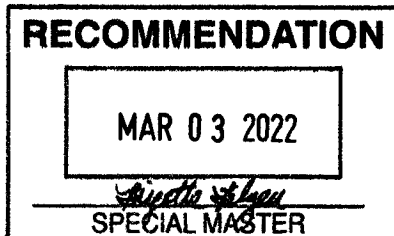
OTHER PROVISIONS NECESSARY FOR DEFINITON OR ADMINISTRATION OF THIS WATER RIGHT:

This right is limited to the intermittent diversion and use of water for the purpose of suppressing wildfires. This water right shall not be used as a basis to prevent the future appropriation of water.

This partial decree is subject to such general provisions necessary for the definition of the rights or for the efficient administration of the water rights as may be ultimately determined by the Court at a point in time no later than the entry of a final unified decree. Idaho Code § 42-1412(6).

RULE 54(b) CERTIFICATE

With respect to the issues determined by the above partial judgment it is hereby CERTIFIED, in accordance with Rule 54(b), I.R.C.P., that the court has determined that there is no just reason for delay of the entry of a final judgment and that the court has and does hereby direct that the above partial judgment is a final judgment upon which execution may issue and an appeal may be taken as provided by the Idaho Appellate Rules.








Eric J. Wildman
Presiding Judge of the
Coeur d'Alene-Spokane River Adjudication

# Attachment 1

	A	B	C	D	E	F	G
1	SOURCE NAME	TO TRIBUTARY	TOWNSHIP	RANGE	SECTION	QQ	SURVEY CODE AND NUMBER
2	Mosquito Creek	North Fork Coeur d'Alene River	54N	02E	20	NWNW	
3	North Fork Coeur d'Alene River	Coeur d'Alene River	54N	02E	20	NWNW	
4	Unnamed Stream	North Fork Coeur d'Alene River	54N	02E	20	NWSE	
5	North Fork Coeur d'Alene River	Coeur d'Alene River	54N	02E	20	SENW	
6	Unnamed Stream	North Fork Coeur d'Alene River	54N	02E	20	SWNE	
7	North Fork Coeur d'Alene River	Coeur d'Alene River	54N	02E	20	SWSE	
8	Buckskin Creek	North Fork Coeur d'Alene River	54N	02E	28	NESW	
9	Unnamed Stream	North Fork Coeur d'Alene River	54N	02E	28	NESW	
10	Unnamed Stream	North Fork Coeur d'Alene River	54N	02E	28	NWSW	
11	Buckskin Creek	North Fork Coeur d'Alene River	54N	02E	28	SWSW	
12	Unnamed Stream	North Fork Coeur d'Alene River	54N	02E	28	SWSW	
13	North Fork Coeur d'Alene River	Coeur d'Alene River	54N	02E	29	SENE	
14	Unnamed Stream	North Fork Coeur d'Alene River	54N	02E	29	SENE	
15	Spruce Creek	North Fork Coeur d'Alene River	54N	02E	31	NENW	
16	Spruce Creek	North Fork Coeur d'Alene River	54N	02E	31	NESW	
17	Larch Creek	Spruce Creek	54N	02E	31	NWSW	L 3
18	Spruce Creek	North Fork Coeur d'Alene River	54N	02E	31	NWSW	L 3
19	Spruce Creek	North Fork Coeur d'Alene River	54N	02E	31	SENE	
20	Spruce Creek	North Fork Coeur d'Alene River	54N	02E	31	SENW	
21	Unnamed Stream	Spruce Creek	54N	02E	31	SESW	
22	Spruce Creek	North Fork Coeur d'Alene River	54N	02E	31	SWNE	
23	Larch Creek	Spruce Creek	54N	02E	31	SWNW	L 2
24	Spruce Creek	North Fork Coeur d'Alene River	54N	02E	31	SWSW	L 4
25	Unnamed Stream	Spruce Creek	54N	02E	31	SWSW	L 4
26	North Fork Coeur d'Alene River	Coeur d'Alene River	54N	02E	32	NESE	
27	Spruce Creek	North Fork Coeur d'Alene River	54N	02E	32	NESE	
28	Spruce Creek	North Fork Coeur d'Alene River	54N	02E	32	NWSE	
29	Spruce Creek	North Fork Coeur d'Alene River	54N	02E	32	SENW	
30	Barren Creek	Spruce Creek	54N	02E	32	SWNW	
31	Spruce Creek	North Fork Coeur d'Alene River	54N	02E	32	SWNW	
32	Unnamed Swamp	Spruce Creek	54N	02E	31		

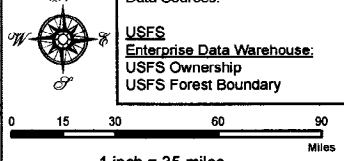
**Attachment 2**  
**Place of Use Map Fire Suppression - Water Right No. 94-09511B**  
**National Forests in Idaho and the Kaniksu, Lolo and Kootenai NF in Montana**

**Key to Features**

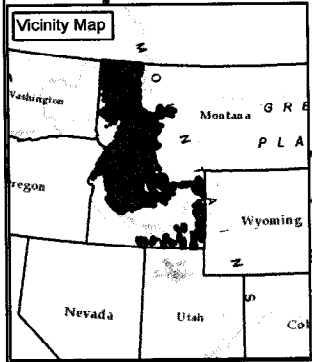
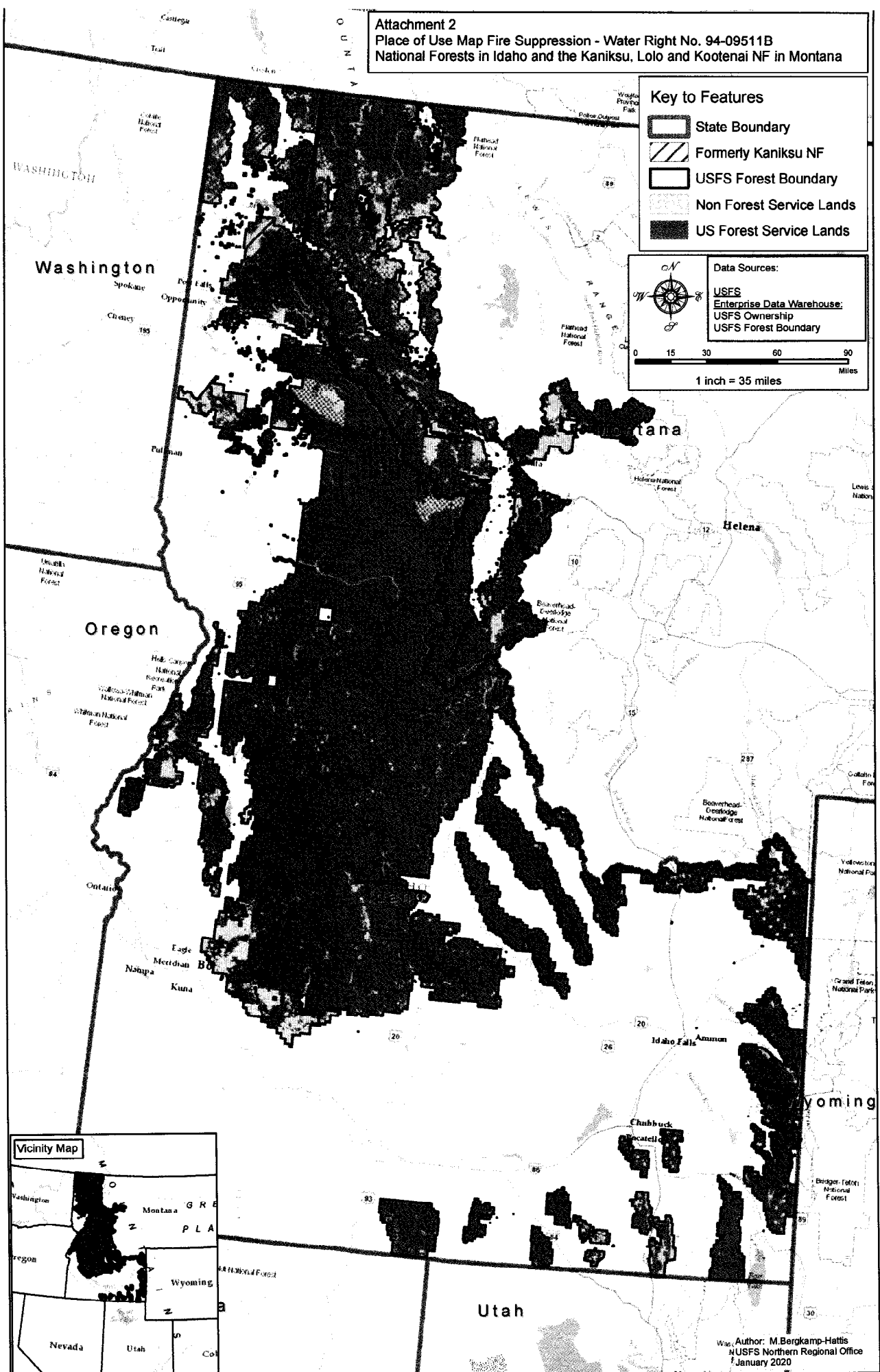
-  State Boundary
-  Formerly Kaniksu NF
-  USFS Forest Boundary
-  Non Forest Service Lands
-  US Forest Service Lands

**Data Sources:**

- USFS
- Enterprise Data Warehouse:
- USFS Ownership
- USFS Forest Boundary



0 15 30 60 90 Miles  
 1 inch = 35 miles



Author: M. Bergkamp-Hattis  
 NUSFS Northern Regional Office  
 January 2020